

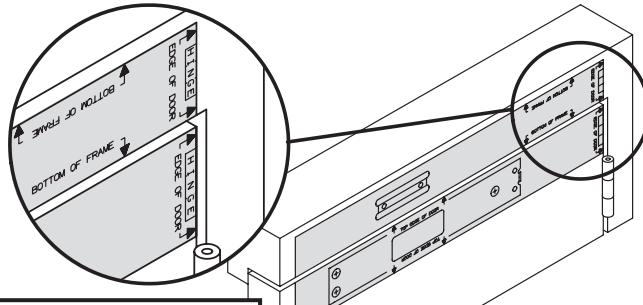
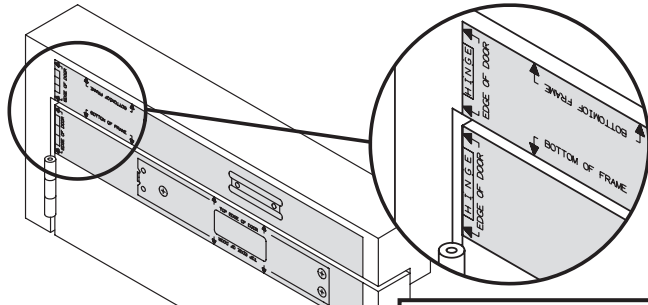
SIZE 1-4 ADJUSTABLE BACKCHECK CLOSER WITH HOLD OPEN ARM

PULL SIDE - REGULAR APPLICATION (FIG. 1)

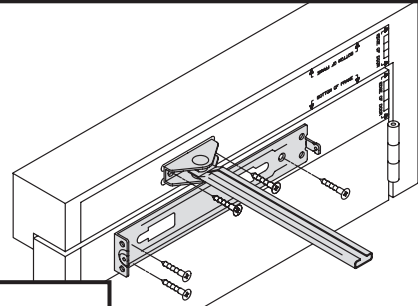
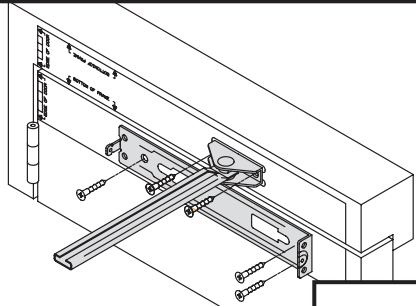
ANGLE OF OPENING 180° SUBJECT TO HINGE & SURROUNDING STRUCTURE

R.H. DOOR

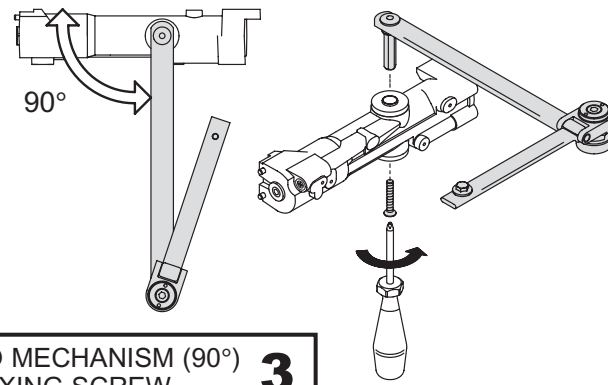
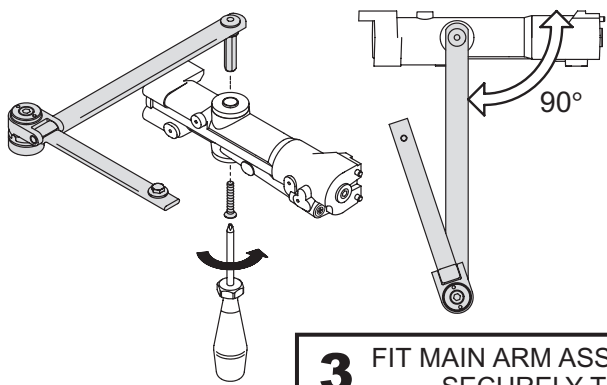
L.H. DOOR



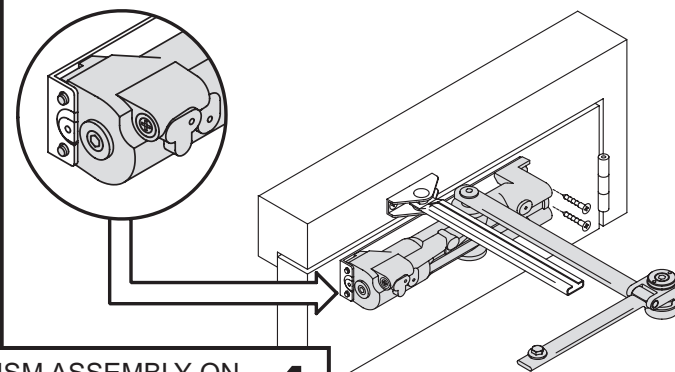
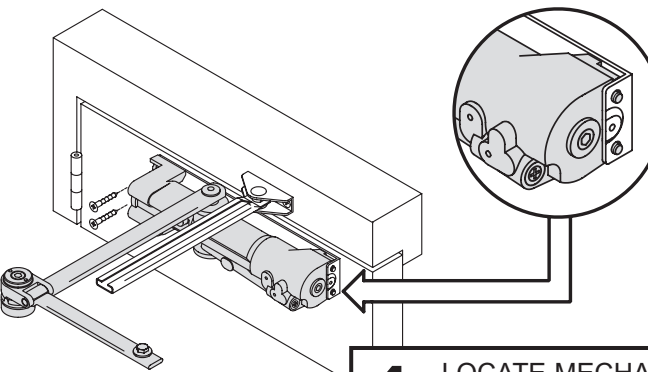
1 PEEL TEMPLATES OFF BACKING PAPER
POSITION ON DOOR/FRAME
PILOT DRILL 7 HOLES **1**



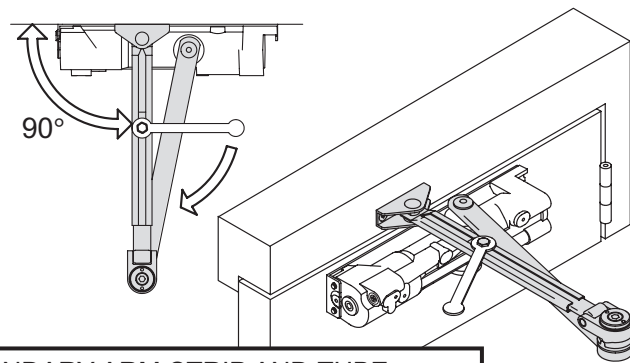
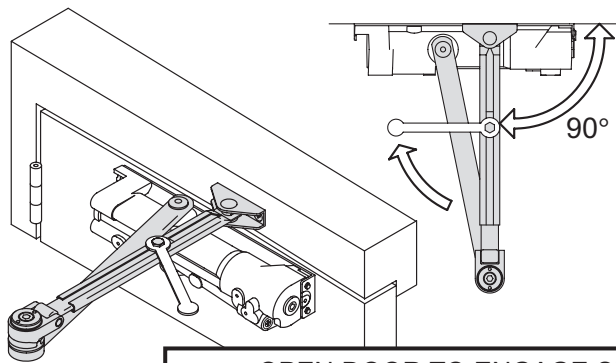
2 FIT BACKPLATE (3 SCREWS)
FIT BRACKET ASSEMBLY (2 SCREWS)
PEEL OFF TEMPLATES **2**



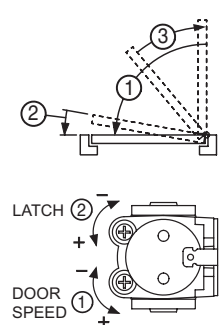
3 FIT MAIN ARM ASSEMBLY TO MECHANISM (90°)
SECURELY TIGHTEN FIXING SCREW **3**



4 LOCATE MECHANISM ASSEMBLY ON
BACKPLATE AND SECURE (2 SCREWS) **4**

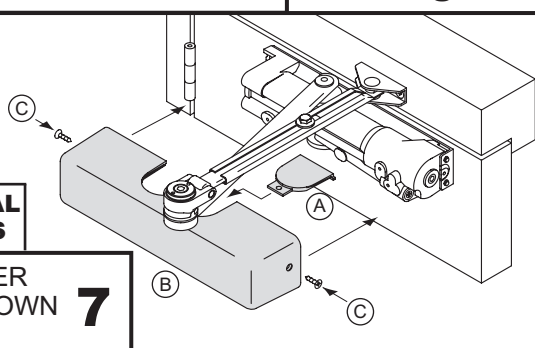
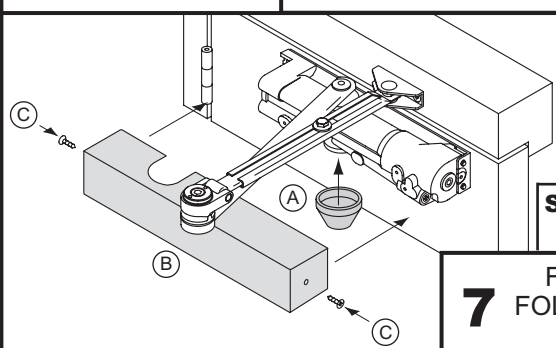
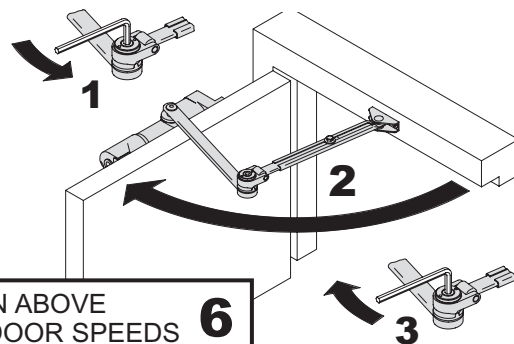


5 OPEN DOOR TO ENGAGE SECONDARY ARM STRIP AND TUBE
CLOSE DOOR AND SET SECONDARY ARM AT 90° TO DOOR FACE
SECURELY TIGHTEN CLAMP BOLT WITH SPANNER **5**



POWER (FIG.1) FACTORY SET TO SIZE 3	
CLOSER POWER SIZE	NUMBER OF TURNS (APPROX)
1	-6
2	-3
3	0
4	+5

6 SET HOLD OPEN ARM AS SHOWN ABOVE
IF NECESSARY ADJUST POWER AND DOOR SPEEDS **6**



STANDARD COVER **OPTIONAL COVERS**

7 FIT COVER TO CLOSER
FOLLOWING STEPS SHOWN
(2 SCREWS) **7**



WARNING
DOOR CLOSER POWER #1 & 2 AND THOSE SUPPLIED
WITH MECHANICAL HOLD OPEN DEVICES MUST NOT BE
INSTALLED ON FIRE / SMOKE DOORS.

2110/104/00
ISSUE A

CLOSER POWER

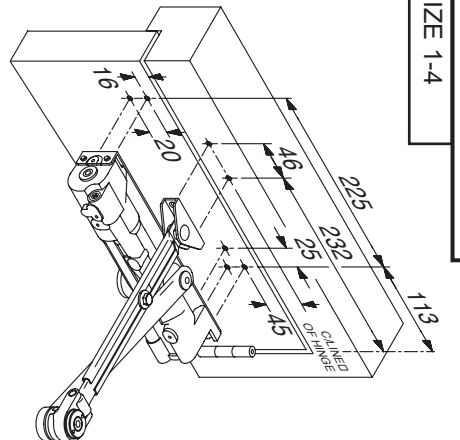
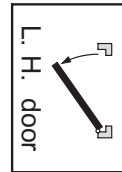
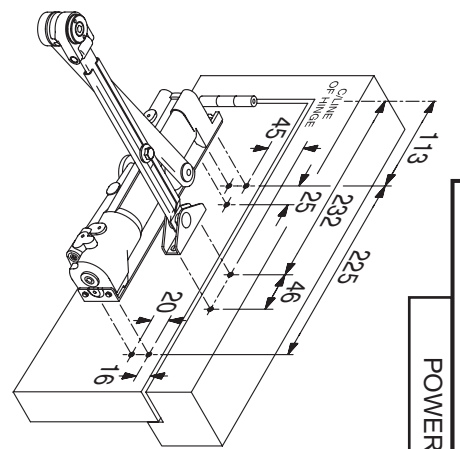
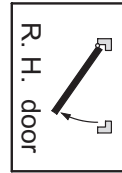
DOOR SIZE

#1
20kg
750 MAX

#2
40kg
850 MAX

#3
60kg
950 MAX

#4
80kg
1100 MAX



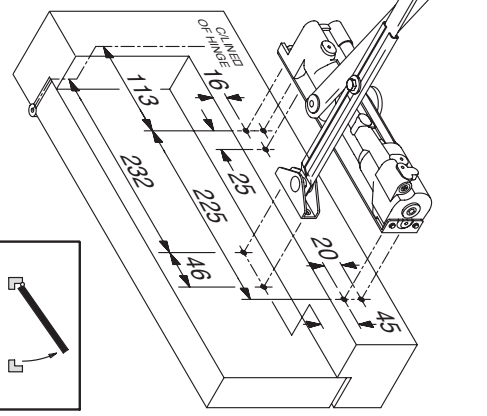
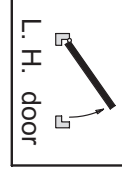
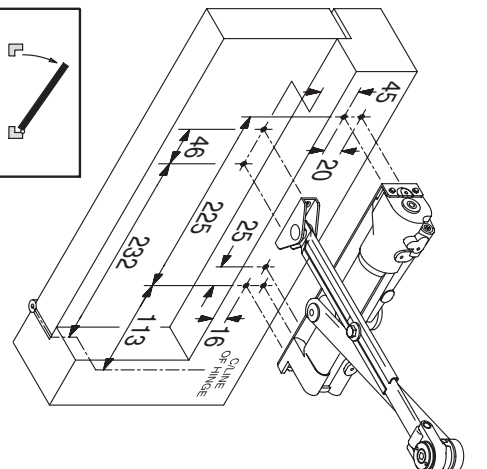
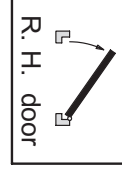
REGULAR FIXING (FIG.1)

POWER SIZE 1-4

FOR TRANSON AND PARALLEL ARM INSTALLATION PROCEDURE SEE OVERLEAF
MAINTENANCE (Quarterly)

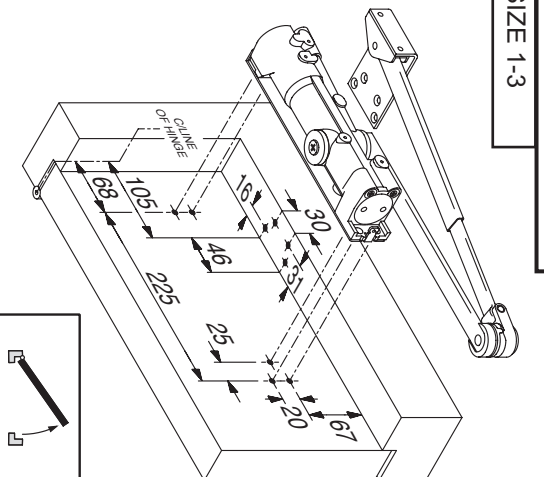
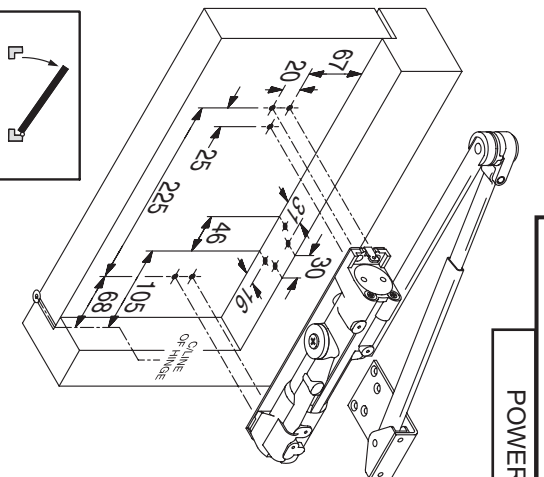
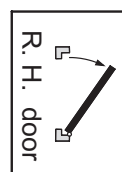
Check that the door closer closes the door correctly and fixing screws are tight.
Periodically apply light oil to arm knuckle joints and door hinges.

NOTE - all dimensions are in millimetres



TRANSON AND PARALLEL ARM FIXING (FIG.61)

POWER SIZE 1-4



PARALLEL ARM FIXING (FIG.66)

POWER SIZE 1-3

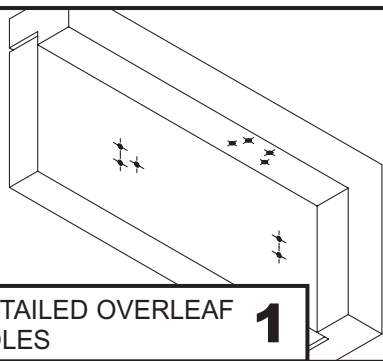
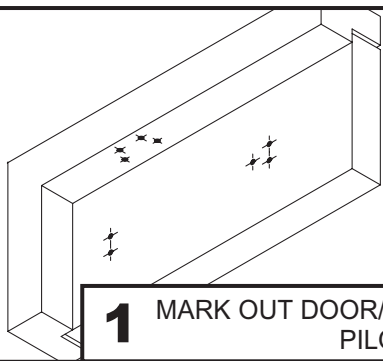
IR Ingersoll Rand
Security Technologies

PUSH SIDE - PARALLEL ARM APPLICATION (FIG.66)

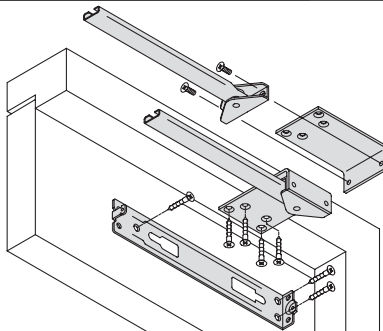
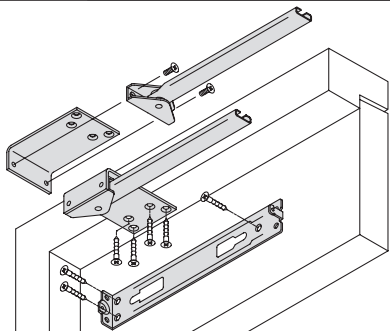
ANGLE OF OPENING 180° SUBJECT TO HINGE & SURROUNDING STRUCTURE

L.H. DOOR

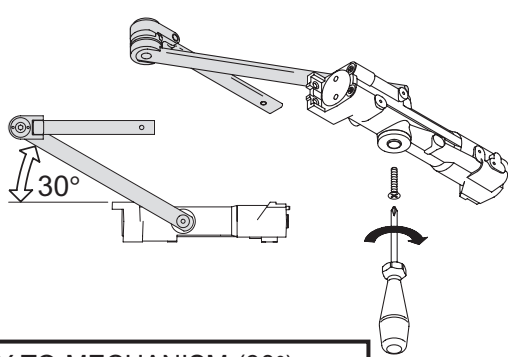
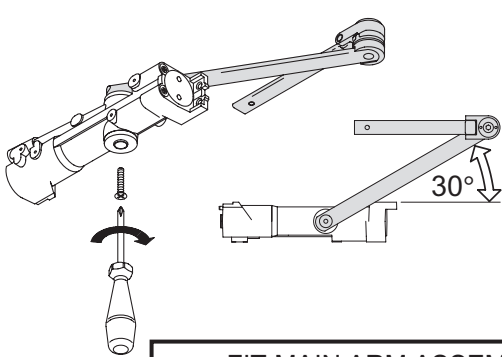
R.H. DOOR



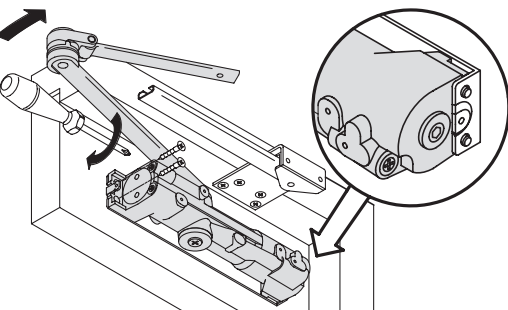
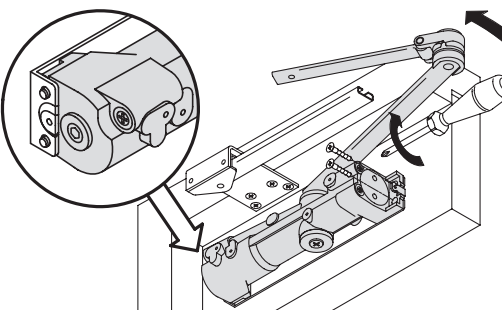
1 MARK OUT DOOR/FRAME AS DETAILED OVERLEAF
PILOT DRILL 9 HOLES **1**



2 FIT BACKPLATE (3 SCREWS)
FIT ARM BRACKET ASSEMBLY TO FIG.66 BRACKET (2 SCREWS)
FIT BRACKET ASSEMBLY TO FRAME (4 SCREWS) **2**



3 FIT MAIN ARM ASSEMBLY TO MECHANISM (30°)
SECURELY TIGHTEN FIXING SCREW **3**



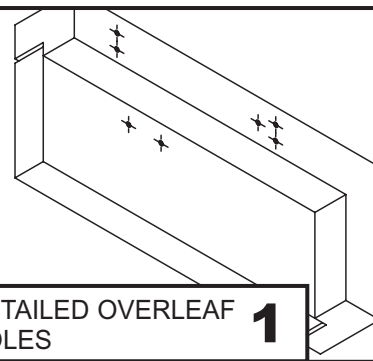
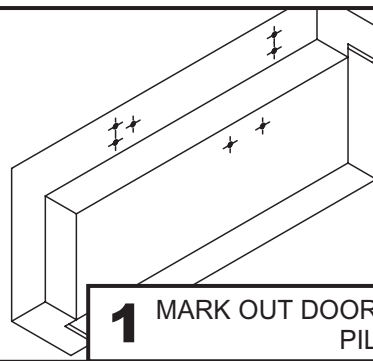
4 FULLY CLOSE DOOR SPEED AND LATCH REGULATORS
PULL MAIN ARM FORWARD, LOCATE MECHANISM ASSEMBLY ON
BACKPLATE AND SECURE (2 SCREWS) **4**

PUSH SIDE TRANSOM APPLICATION (FIG.61)

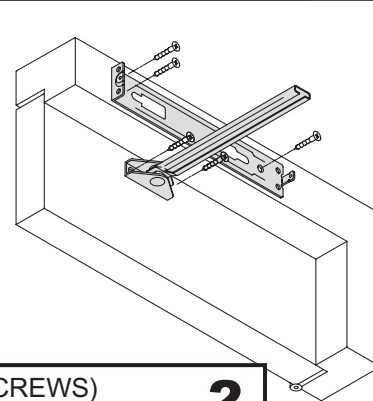
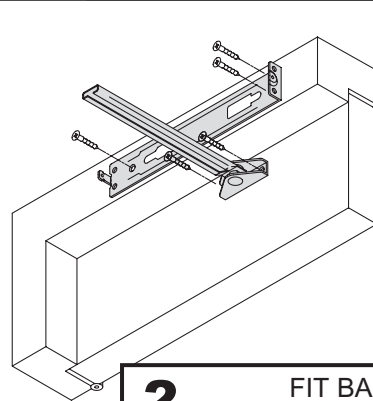
ANGLE OF OPENING 180° SUBJECT TO HINGE & SURROUNDING STRUCTURE

L.H. DOOR

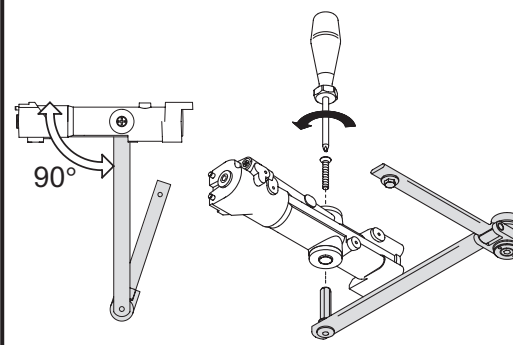
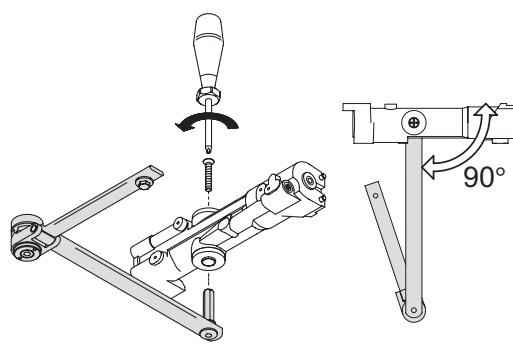
R.H. DOOR



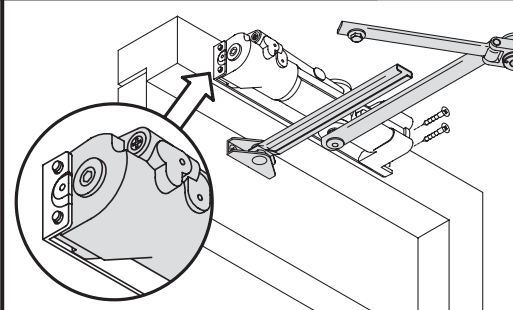
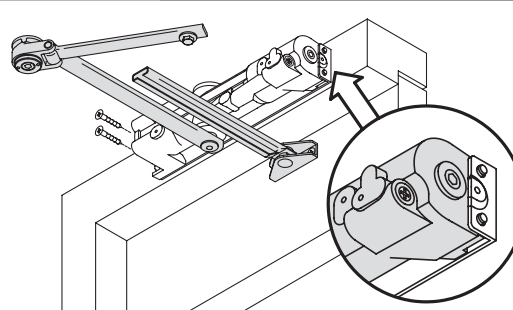
1 MARK OUT DOOR/FRAME AS DETAILED OVERLEAF
PILOT DRILL 7 HOLES **1**



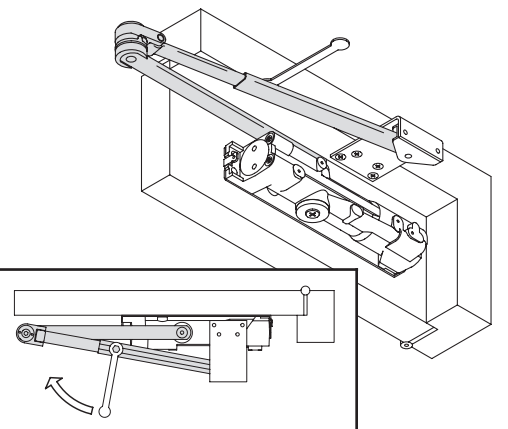
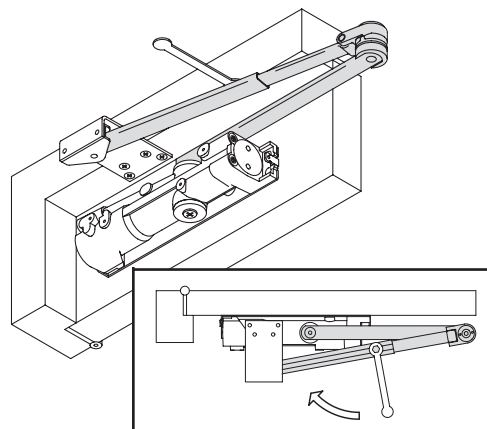
2 FIT BACKPLATE (3 SCREWS)
FIT ARM BRACKET ASSEMBLY (2 SCREWS) **2**



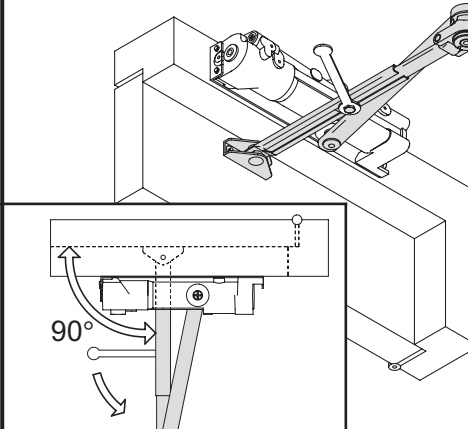
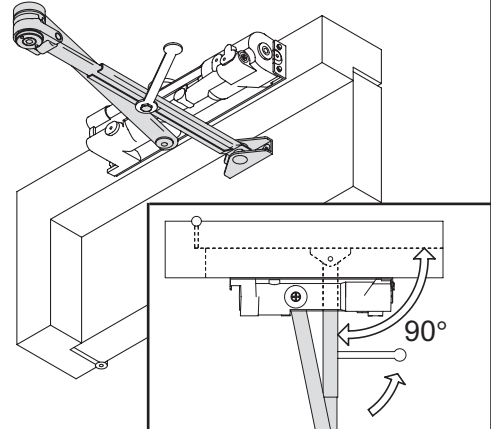
3 FIT MAIN ARM ASSEMBLY TO MECHANISM (90°)
SECURELY TIGHTEN FIXING SCREW **3**



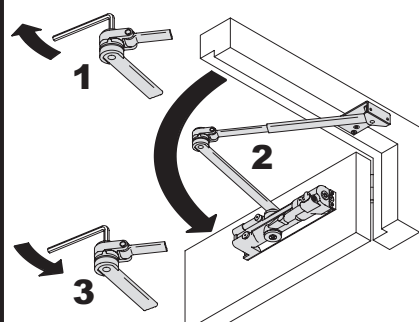
4 LOCATE MECHANISM ASSEMBLY ON BACKPLATE
AND SECURE (2 SCREWS) **4**



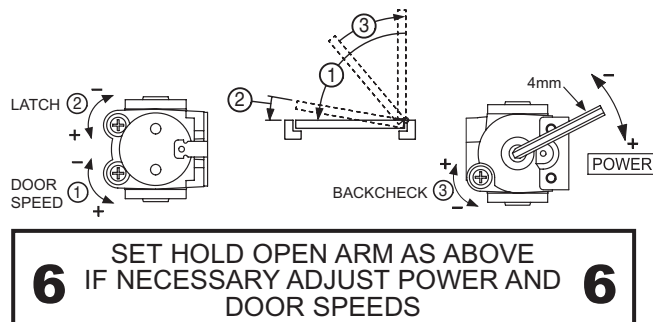
5 OPEN DOOR TO ENGAGE SECONDARY ARM STRIP AND TUBE
CLOSE DOOR AND SET ARMS AS SHOWN ABOVE
SECURELY TIGHTEN CLAMP BOLT WITH SPANNER **5**



5 OPEN DOOR TO ENGAGE SECONDARY ARM STRIP AND TUBE
CLOSE DOOR AND SET SECONDARY ARM AT 90° TO DOOR FACE
SECURELY TIGHTEN CLAMP BOLT WITH SPANNER **5**

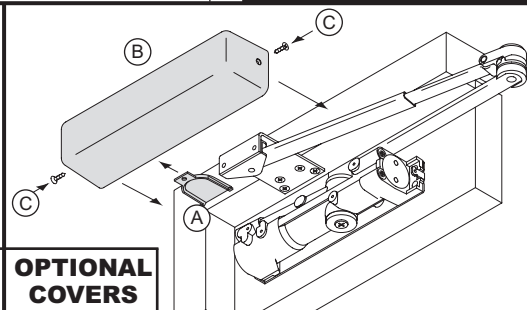
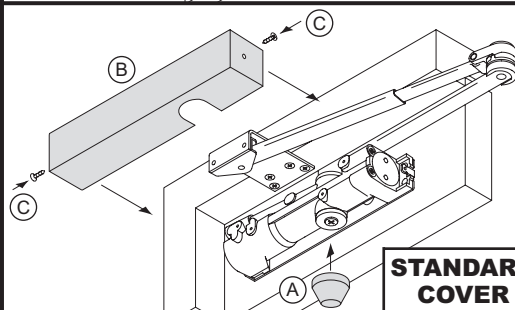
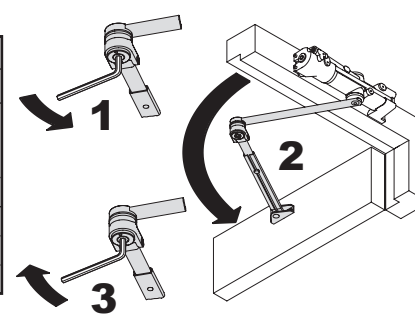


POWER (FIG.66)	
FACTORY SET TO SIZE 3	
CLOSER POWER SIZE	NUMBER OF TURNS (APPROX)
1	-6
2	-3
3	0
3+	+5

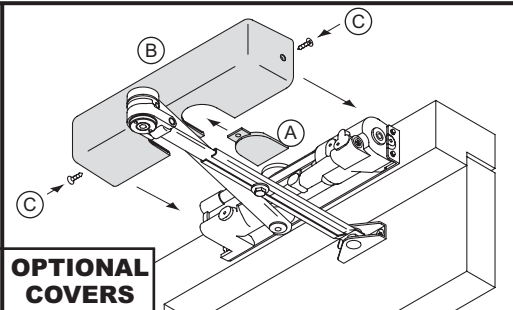
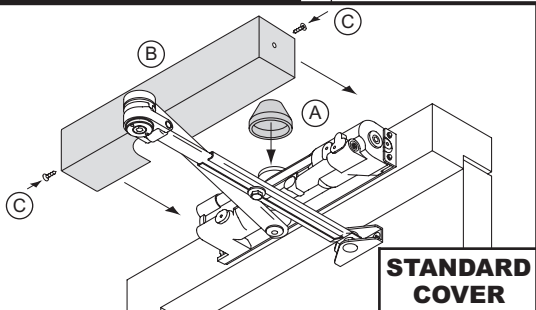


6 SET HOLD OPEN ARM AS ABOVE
IF NECESSARY ADJUST POWER AND DOOR SPEEDS **6**

POWER (FIG.61)	
FACTORY SET TO SIZE 3	
CLOSER POWER SIZE	NUMBER OF TURNS (APPROX)
1	-5
2	-3
3	0
4	+5



7 FIT COVER TO CLOSER FOLLOWING STEPS SHOWN (2 SCREWS) **7**



7 FIT COVER TO CLOSER FOLLOWING STEPS SHOWN (2 SCREWS) **7**